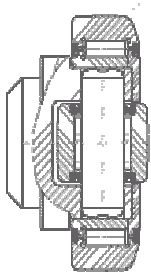


COMBINATION BEARINGS

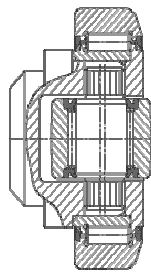
Combination bearings are ideal for use in lift truck columns and horizontal and vertical handling systems.

These bearings allow movement in two perpendicular directions eliminating the need for the standard two bearing system. This reduces costs by using half the bearings and welding junction points, as well as reducing assembly, and later, maintenance time.

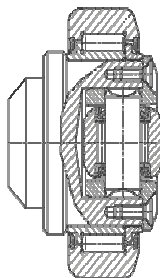
TYPES OF COMBINATION BEARINGS



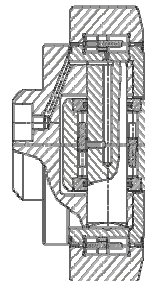
STANDARD
COMBINATION
BEARING
CF Series



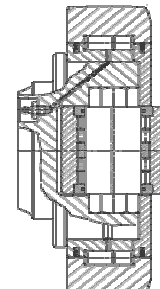
ADJUSTABLE
COMBINATION
BEARING
with ECCENTRIC PIN



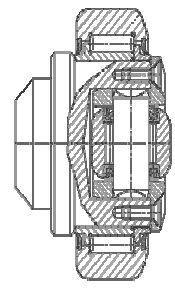
ADJUSTABLE
COMBINATION
BEARING
CR Series



HIGH SPEED
COMBINATION
BEARING
CG Series

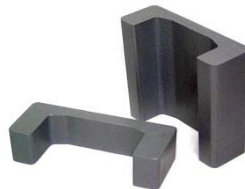


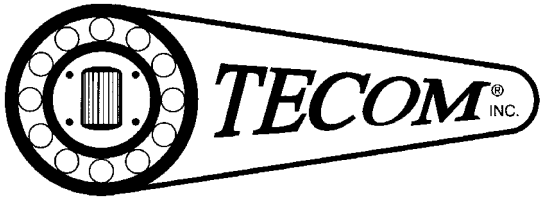
JUMBO
ADJUSTABLE
COMBINATION
BEARING
with ECCENTRIC PIN



COMBINATION
BEARING
for
"I" PROFILES

Combine these bearings with flange plates and guide rail to maximize your design options and efficiency.





COMBINATION BEARINGS

DESIGN EXAMPLES

