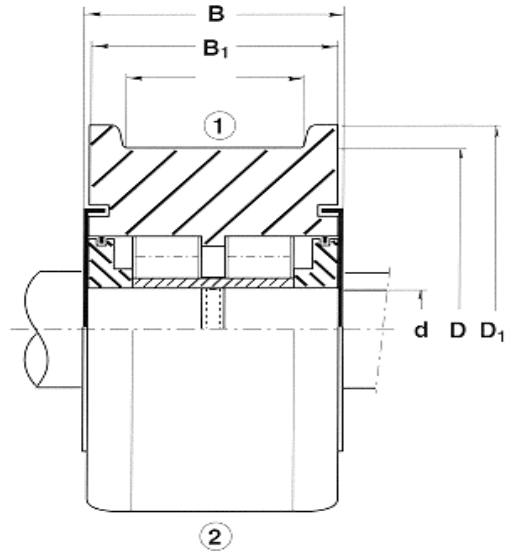


**CONVEYOR  
WHEELS  
Series 7**



Part Number	d mm	D mm	D1 mm	A mm	B1 mm	B mm	C KN	Co KN	n/min rpm
9.1947A	50	125	140	40	60	65	128	133	1100
9.1947B	60	150	170	50	70	75	195	214	900
9.1947C	70	165	190	55	75	80	228	246	700
9.1947D	80	185	210	60	80	85	283	319	550
9.1947E	100	215	250	65	85	90	356	411	400
9.1947F	120	255	290	70	95	100	472	581	300

C	Dynamic Load
Co	Static Load

NOTE:	<ul style="list-style-type: none"> <li>- maximum speed refers to grease lubrication</li> <li>- execution with cages for applications with higher speed are available</li> <li>- the load capacities are calculated according to ISO</li> <li>- other types are available by request</li> </ul>
-------	--