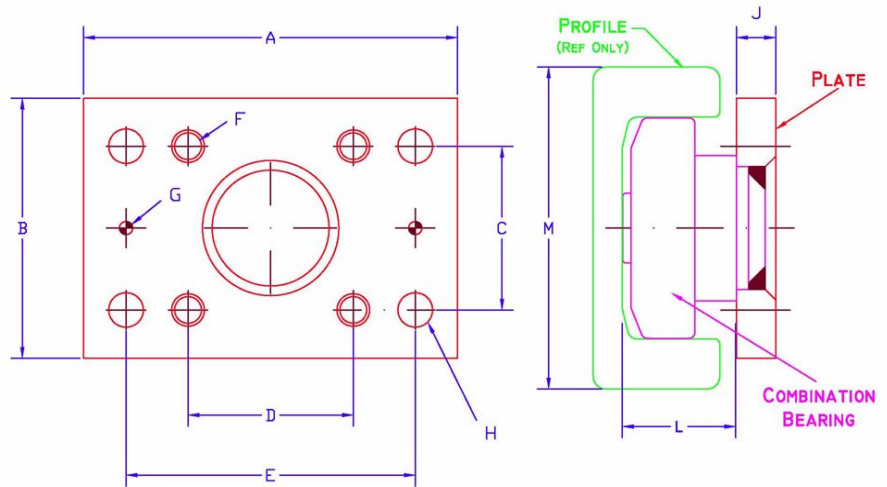


FLANGE WELDMENTS

(For U-Profile)

FW Series

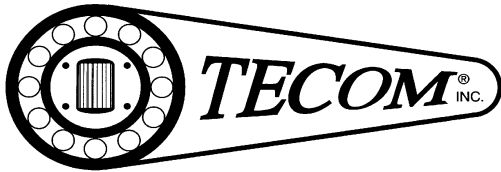


FLANGE WELDMENT** (Bearing & Plate)	A (inch)	B (inch)	C (mm)	D (mm)	E (mm)	F (inch) UNC	G (inch)	H (inch)	J (inch)	L (mm)	COMES WITH:		Mating Profile M (mm)	
											FLANGE PLATE	BEARING		
FW10-4053	3 9/16	2	30	40	70	5/16	1/4	11/32	3/8	27	PL10	CF4.053-53	53U	65
FW20-4054 FW20-4454 FW20-4072	4	2 3/8	40	40	80	3/8	1/4	13/32	3/8	31 30.5-32 33	PL20	CF4.054-62 4.454 CR4.072-62	2890	86.5
FW30-4055 FW30-4455 FW30-4073	5	3 5/32	50	50	90	1/2	1/4	17/32	5/8	36 36-37.5 40	PL30	CF4.055-70 4.455 CR4.073-70	2867	103.2
FW40-4056 FW40-4456 FW40-4074	5	3 5/32	50	50	90	1/2	1/4	17/32	5/8	36.5 37-38.5 39.5	PL40	CF4.056-78 4.456 CR4.074-78	2810	121.3
FW50A-4058* FW50A-4458* FW50A-4076*	5	5	90	90	N/A	5/8	N/A	N/A	3/4	44 44-44.5 48	PL50a*	CF4.058-88 4.458 CR4.076-88	2811	135.4
FW60-4061 FW60-4461 FW60-4078L	7 1/8	5	80	80	140	5/8	1/4	21/32	3/4	55 55-57 59	PL60	CF4.061-108 4.461 CR4.078-L	2862	157.2
FW60-4062 FW60-4462 FW60-4079										56 56-60 59.5				
FW70-4063 FW70-4011 FW70-4463 FW70-4080	8	6	100	100	160	5/8	1/4	21/32	3/4	58.8 67 58.5-62.5 69	PL70	CF4.063-149 CF4.011-149 4.463 CR4.080-149	2757	201.5

*PL50a plate is square and comes with threaded holes only.

**Flange Weldment are shipped as one unit with a combination bearing welded to a flangeplate (see example on next page).

Bearing types:	CF4....	Standard Combination Bearing (recommended)
	4.4.....	Adjustable Combination Bearing with Eccentric Pin
	CR4.....	Adjustable Combination Bearing



FLANGE WELDMENTS (For U-Profile) FW Series – Page 2.

Example - a FW60-4061 includes: Standard Combination Bearing CF4.061-108 welded to a PL60 Plate.
This will ship as one unit.

If shims are required than they would be ordered as: "T100025 0.5mm Shim Set" and "T100026 1.0mm Shim Set" (each set includes two shims - one for each end of the plate). Typical orders include one or more sets of each (0.5mm and 1.0mm) per flange weldment. See below for shim part numbers.

Plate Part Number	Shim Part number	
	0.5mm	1.0mm
PL10	T100015	T100016
PL20	T100017	T100018
PL30	T100019	T100020
PL40	T100019	T100020
PL50	T100023	T100024
PL60	T100025	T100026
PL70	T100027	T100028

Custom plates are available