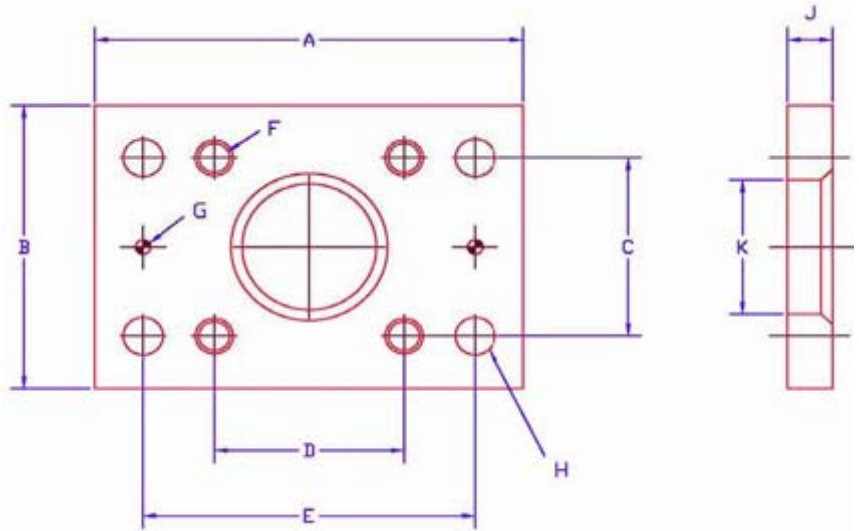


*FLANGE
PLATES
PL Series*

(Custom plates are available)



FLANGE PLATE	A (inch)	B (inch)	C (mm)	D (mm)	E (mm)	F (inch) UNC	G (inch)	H (inch)	J (inch)	K (mm)
PL10	3 9/16	2	30	40	70	5/16	1/4	11/32	3/8	30
PL20	4	2 3/8	40	40	80	3/8	1/4	13/32	3/8	30
PL30	5	3 5/32	50	50	90	1/2	1/4	17/32	5/8	35
PL40	5	3 5/32	50	50	90	1/2	1/4	17/32	5/8	40
PL50a*	5	5	90	90	N/A	5/8	N/A	N/A	3/4	45
PL60	7	5	80	80	140	5/8	1/4	21/32	3/4	60
PL60a	7 1/8	5	80	80	140	5/8	1/4	21/32	3/4	55
PL70	8	6	100	100	160	5/8	1/4	21/32	3/4	60

*PL50a plate is square and comes with threaded holes only.

Plates are typically sold as part of a Flange Weldment (Combination Bearing welded to a Plate. This will ship as one unit).

If shims are required than they would be ordered as: "T100025 0.5mm Shim Set" and "T100026 1.0mm Shim Set" (each set includes two shims - one for each end of the plate). Typical orders include one or more sets of each (0.5mm and 1.0mm) per flange weldment. See below for shim part numbers.

Plate Part Number	Shim Part number	
	0.5mm	1.0mm
PL10	T100015	T100016
PL20	T100017	T100018
PL30	T100019	T100020
PL40	T100019	T100020
PL50	T100023	T100024
PL60	T100025	T100026
PL70	T100027	T100028

TECOM Inc.

205 St. George Street, Unit 5, Lindsay, Ontario, Canada
T: 705 878 3650 – F: 705 878 5019

www.crbearing.com